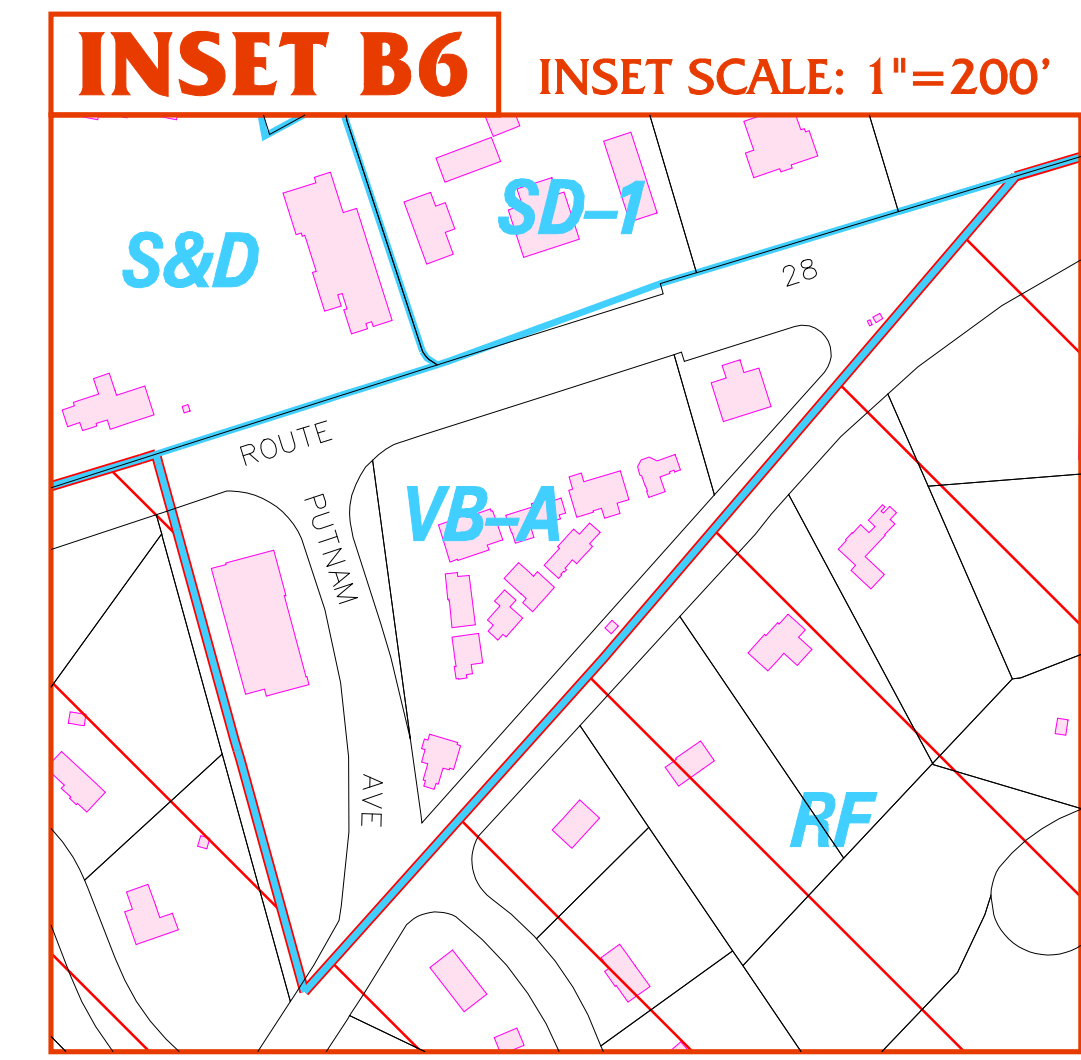
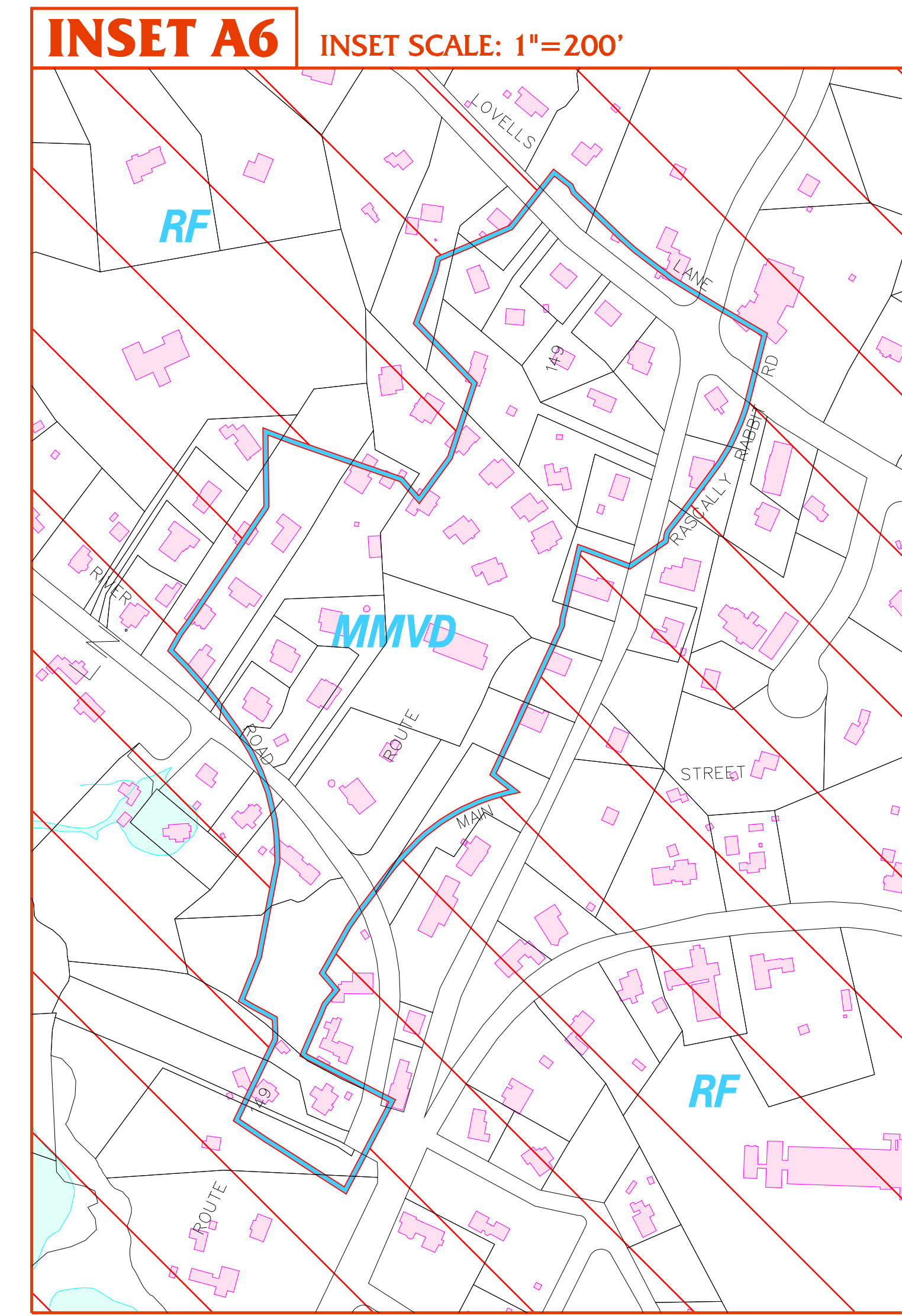
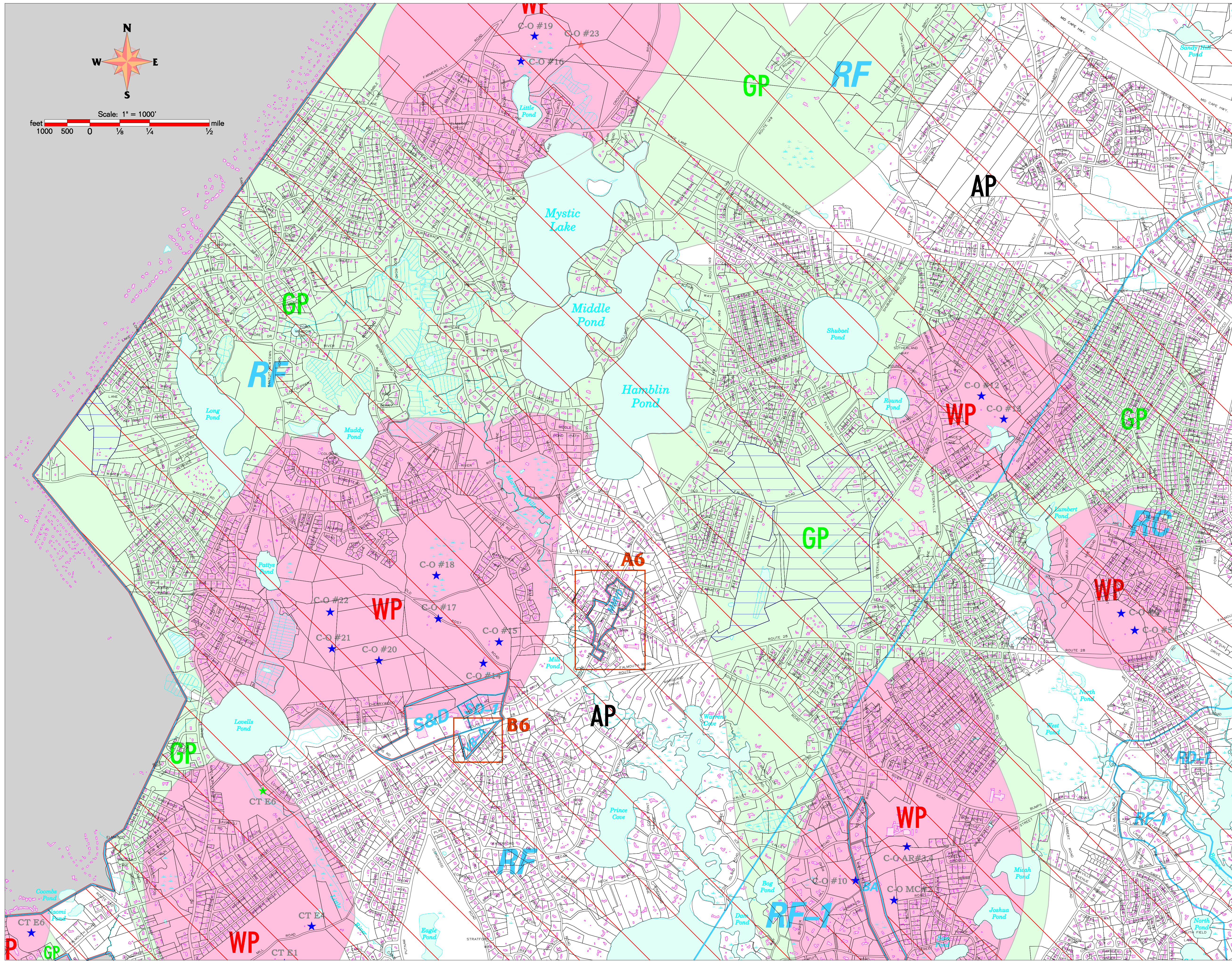
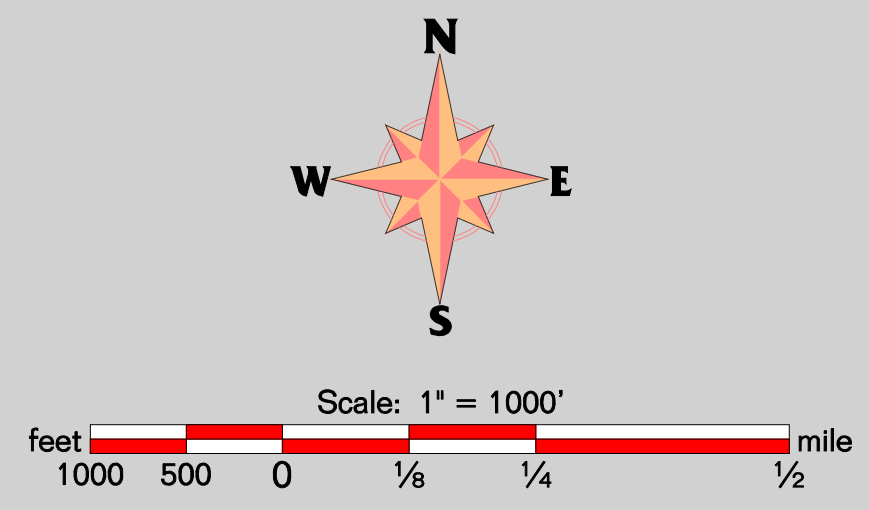


ZONING MAP of the TOWN OF BARNSTABLE, MASSACHUSETTS

LAST AMENDED SEPTEMBER 1, 2022

MARSTONS MILLS - SHEET 6 OF 7



Map Legend

| | | | |
|--|--|--|----------------------------------|
| | Zoning District | | Existing Public Well Site |
| | Wellhead Protection Overlay District | | Proven Future Public Well Site |
| | Groundwater Protection Overlay District | | Proposed Future Public Well Site |
| | Aquifer Protection Overlay District <small>All other areas not identified as Wellhead or Groundwater Protection Overlay Districts</small> | | Parcel Lines (FY 2021) |
| | Adult Use Overlay District | | Buildings |
| | Docks & Piers Overlay District | | Railroad Track |
| | Former Grade 5 School Planned Unit Development Overlay District | | Town Boundary Line |
| | Medical Services Overlay District | | Marsh Area |
| | Resource Protection Overlay District | | Stream / Edge of Water |
| | Shopping Center Redevelopment Overlay District | <small>NOTE: The parcel lines are for assessing purposes only. They do NOT represent authoritative property boundary locations. SEE TEXT OF ZONING ORDINANCE FOR COMPLETE INFORMATION ON BULK REGULATIONS.</small> | |
| | Senior Continuing Care Retirement Community - SCRCOD 2008-1 | <small>Where a zoning district boundary is located at the edge of a water body, that zone that applies to the land shall apply to structures and uses such as piers and commercial boating operations to the extent of the territorial jurisdiction of the town.</small> | |
| | Recreational Shellfish Area and Shellfish Relay Area Dock & Pier Overlay District | <small>Where zoning district boundaries are located along the edge of a roadway and a distance is shown from such point to another zoning boundary, such distance and points shall be from the edge of the road layout. The ultimate location of such points shall be determined by survey as the line shown on this map is considered an approximation.</small> | |
| | Ground Mounted Solar Photovoltaic Overlay District | | |